

To Order Call Toll Free:
1-877-805-3377



BC-1000 Industrial Float Battery Charger

Common Applications: Utility, switchgear, process control, & other industrial applications



BC-1000 S-1 Charger

Product Description

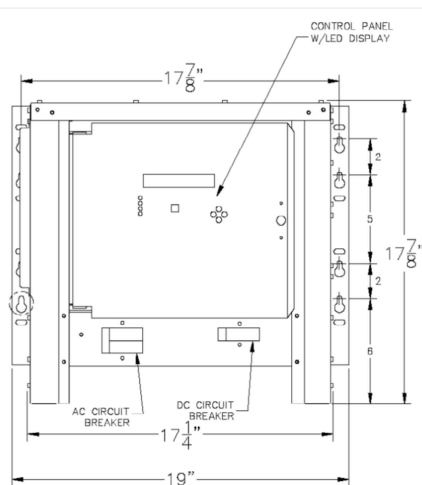
The **BC-1000** is a stationary power float battery charger designed for use in utility, switchgear, and other industrial environments. Nominal ratings include 24, 48, and 130 volts DC. Built-in alarms are included for high DC voltage, low DC voltage, positive and negative ground fault, and end of discharge. A number of safety features are included such as wire protection on all field terminals and full AC input and DC output protection.

Standard Features

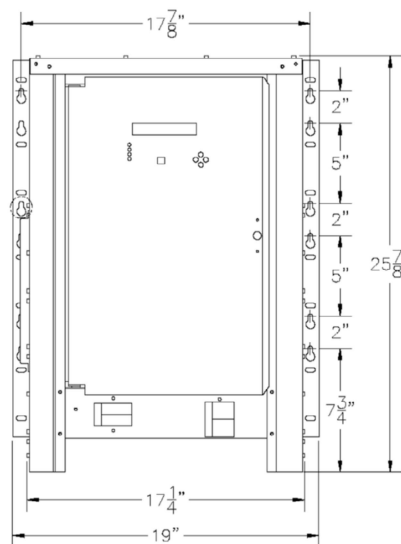
- LCD Display and Navigation Pad
- Field Programmable with Security Levels
- Compatible with a wide variety of battery types
 - Vented lead-acid (VLA), valve regulated lead acid (VRLA), and nickel-cadmium (Ni-Cd)
- AC, DC, Float and Equalize Indicator LEDs
- High / low DC Voltage Alarm
- High / low DC Voltage Alarm and AC Fail Indication
- Positive and Negative Ground Fault Alarm
- High DC Voltage Shutdown
- Summary Alarm Relay
- Summary Alarm Buzzer
- Push Button Mode Selection
- Full AC Input and DC Output Protection
- AC Input and DC Output Circuit Breakers
- Control Panel and Circuit Breakers Recessed
- AC and DC Surge Suppressors
- Wire Protection on all Field Terminals
- Bottom / Side Cable Entry
- Compression Terminal Strip for Field Wiring

Optional Features

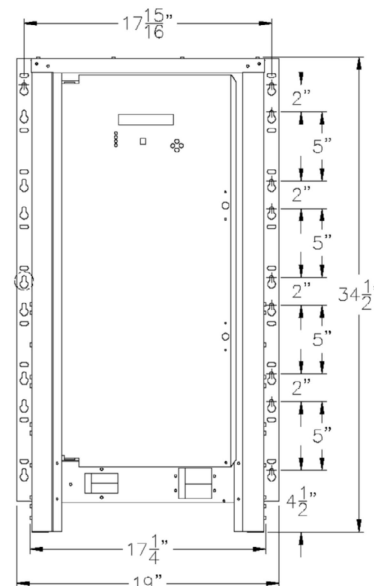
- Enhanced DC Output Filtering / Battery Eliminator
- Individual Alarm Relay Contact Board
- AC Input Lightning Arrestor
- Remote DC Voltage Sensor
- Remote Battery Temperature Sensor
- Conformal Coated Electronic Boards
- EIA 19-inch or 23-inch Rear Rack



S-1 Chassis



S-2 Chassis



S-3 Chassis



To Order Call Toll Free:
1-877-805-3377

BC-SERIES

Float Battery Chargers

Technical Specifications				
Specification	Conditions	24 VDC	48 VDC	130 VDC
Output Voltage Regulation	VAC +10%, -12%	± 0.25%		± 0.25%
	0 – 100% load			
	Temp. 32 – 105°F (0 – 40°C)			
	Freq. 50 – 60 Hz ± 3 Hz			
Transient Response	20 – 100% load charge, with battery connected	Does not exceed ± 6%. Does not activate High Voltage Alarm.		
Output Ripple Voltage (Meets or Exceeds NEMA PE5 Requirements)	Standard filtering on battery	1% V rms	2% V rms	
	Enhanced filtering / battery eliminator	30 mV rms	30 mV rms	
	Enhanced filtering / battery eliminator off battery	30 mV rms	100 mV rms	
Current Limit	Adjustable	0 – 110%		
Charger Delay	After AC return	8 sec. to 60 min.		
Soft Start	0 – 100% load	Dynamic depending on battery voltage		
Voltage Adjustment Range	Float	2.00 – 2.50 V/C		
	Equalize	2.00 – 2.50 V/C		
	High DC Voltage alarm	1.00 – 2.70 V/C		
	Low DC Voltage alarm	1.00 – 2.50 V/C		
	End of Discharge Voltage alarm	1.00 – 2.00 V/C		
Voltmeter Range	All ratings	0 – 120%		
Reverse Current From Battery	AC input power failure; no options installed	Less than 90 mA		
Audible Noise	Average for 4 sides, 5 ft. from charger	Less than 62 dB (A)		
Cooling		Natural Convection (No Fans)		
Ambient Temperature	Operating	32 – 105°F (0 – 40°C)		
Elevation	Without Derating	1000 m (3000 ft)		
Relative Humidity	Non-Condensing	0 – 95%		
Alarm Relay Contact Rating	Max. Switching Voltage	150 VDC, 125 VAC		
	Max. Switching Power	30 WDC, 60 VA AC		
	Max. Switching Current	2.0 A		
	Max. Carry Current	2.0 A		
Certifications	UL listed, 1012 and 1564; cUL/CSA certified; FCC part 15 and ICES-003, class A; designed to NEMA PE5			
Dimensions (WxHxD)	S-1	483 x 435 x 454 mm (19.00 x 17.125 x 17.875 in.)		
	S-2	483 x 657 x 454 mm (19.00 x 25.875 x 17.875 in.)		
	S-3	483 x 902 x 456 mm (19.00 x 34.5 x 17.9375 in.)		
Case Material	Powder-coated steel			
Cooling	Natural convection (no fans)			
Mounting	Wall, floor, shelf, EIA 19-inch rear rack			

Ordering Information

No.	Model #	Description
1	BC-1000	Stationary Power Float Battery Charger, 24, 48, or 130 Volts DC