

To Order Call Toll Free:
1-877-805-3377



BC-2200 Modular Float Battery Charger & Power Supply

Common Applications: Generator starting, switchgear, process control, & other industrial applications



BC-2200 4-Slot Chassis

Product Description

The **BC-2200** is a Float Battery Charger and Power Supply based on a modular, redundant platform design. It utilizes industrial switch mode technology. The 400W hot-swappable **Intelligent Power Modules (iPMs)** are available at the following ratings:

- 12Vdc, 400W, 20.0A (Max), 20.0A (Rated)
- 24Vdc, 400W, 10.0A (Max), 10.0A (Rated)

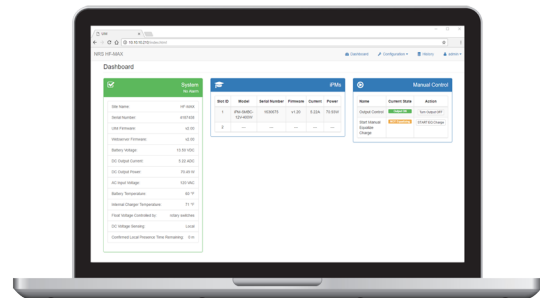
Multiple iPMs in a single chassis provide redundancy (N+1, N+2, etc.) and will continue to operate if the user interface module (UIM) fails. This ensures reliability for high availability/uptime applications. The BC-2000 features industrial construction and is available in 2, 4-slot chassis options. The BC-2200 is compatible with vented lead-acid (VLA), valve regulated lead-acid, and nickel-cadmium (Ni-Cd) battery types.

Product Features

- Industrial switch mode (high frequency) technology
- AC/DC powered UIM for continued operation without AC
- Heavy-duty construction for ruggedness and reliability
- Natural convection cooled (no fans)
- Conformal coated circuit boards for moisture protection
- High energy efficiency of > 93% at 240 VAC and > 91% at 120 VAC and full load
- Low DC output ripple - battery eliminator option standard
- Universal AC input: 100 – 240 VAC, 50 – 200 Hz
- Battery temperature compensation with controlled limits
- Alarms can be individually enabled/disabled, assigned a delay, assigned a priority, and assigned to the Form C dry contact summary alarm relay
- Ethernet for local access to logging data, and programming (using the *Confirm Local Presence* button for security)
- SNMP alarming and NTP date/time sync via Ethernet
- Real-time clock with battery backup
- Full AC input and DC output protection
- UL 1236 and cUL/CSA equivalents (pending)
- CE certified (pending)
- Digital amp/volt meter included standard on all units

iPM (Intelligent Power Module)

- Modular component of the BC-2200
- Multiple iPMs in a single charger offer redundancy
- Hot swappable



View in Browser or Mobile Device

Web-Based Software

- Internal web server uses a modern, responsive framework for attractive display on smart phones and tablets
- Access on any desktop PC or laptop via web browser
- View all measured parameters in real-time
- Log up to 10,000 history records, downloadable to a CSV file
- Ethernet communication standard for field or remote monitoring



To Order Call Toll Free:
1-877-805-3377

| AC Input | |
|---------------------------------|--|
| Voltage range, rated | 100 – 240 VAC |
| Voltage range, operating | 90 – 264 VAC; < 100 VAC: reduced power |
| Frequency, rated | 50 – 200 Hz |
| Frequency, operating | 45 – 205 Hz |
| Phase | Single-phase |
| Efficiency | > 91%, 120 VAC, full load; > 93%, 240 VAC, full load; |
| Power Factor | > 0.98, 120 VAC, full load; > 0.96, 240 VAC, full load |
| Protection | Current limit, surge, transient, under voltage, over voltage |

| DC Output | |
|---------------------------|--|
| Voltage range | |
| 12 VDC | 1 – 20 VDC |
| 24 VDC | 10 – 40 VDC |
| Power, maximum, per iPM | |
| 12 VDC | 400 W |
| 24 VDC | 400 W |
| Current, maximum, per iPM | |
| 12 VDC | 20 A |
| 24 VDC | 10 A |
| Current, rated, per iPM | |
| 12 VDC | 20 A |
| 24 VDC | 10 A |
| Protection | Current limit, short circuit, reverse polarity, surge, transient |

| Environmental | |
|------------------------------|--------------------------|
| Operating temperature | -40 – 70°C (-40 – 158°F) |
| Storage temperature | -55 – 85°C (-67 – 185°F) |
| Humidity range | 0 – 95%, non-condensing |

| User Interface | |
|-------------------------------|---|
| Communication | Ethernet; 10/100BASE-TX; auto crossover, auto MDI-X; RJ45 connector; support for TCP/IP, NTP, and SNMP Traps; internal web server; ability to be used for networked comm or direct comm (direct connection to a laptop) |
| DC voltage switches | 2 switches for Number of Cells 3 switches for Volts per Cell |
| Button | Confirm Local Presence |
| Battery temp comp | Yes (sensor optional) |
| Remote voltage sensing | Yes (sensor optional) |
| LEDs | |
| UIM | 4 single-color; AC Present, Alarm UIM Status, Confirm Local Presence |
| iPM | 1 tri-color; DC Output, Fault |

| Alarming | |
|----------------------------|--|
| Alarms | Individually enabled/disabled assigned a delay, assigned a priority, assigned to the summary alarm relay |
| Summary alarm relay | Form C, dry contact |
| Ethernet alarming | SNMP Traps |
| Logging | Up to 10,000 events (alarms, faults, AC on/off) |
| Mechanical | |
| Cooling | Natural convection (no fans) |
| Protection | Conformal coated circuit boards |
| AC/DC terminals | Terminal posts |
| Dimensions (WxHxD) | Including standard brackets |
| 2-slot chassis | 10-1/4 x 10-5/16 x 11-13/16 in. |
| 4-slot chassis | 18-15/16 x 10-5/16 x 11-13/16 in. |
| Mounting | Wall, shelf, floor, EIA 19-inch and 23-inch rack (front or rear) |

| Certifications (Pending) | |
|---|--|
| UL 1236 and cUL/CSA equivalents; FCC Part 15, Class A; CEC Appliance Efficiency Regulations, Title 20; EN emissions, immunity, safety; CE certified | |

Ordering Information

| No. | Model # | Description |
|-----|---------|---|
| 1 | BC-2200 | Modular Float Battery Charger & Power Supply: 12 or 24VDC |