

To Order Call Toll Free:  
**1-877-805-3377**



# BC-2500 Modular Float Battery Charger & Power Supply

**Common Applications:** Utility, switchgear, process control, & other industrial applications



BC-2500 4 & 8-Slot Chassis

## Product Description

The **BC-2500** is a Float Battery Charger and Power Supply based on a modular, redundant platform design. It utilizes high availability with uptime architecture. Available in 480W or 400W with hot-swappable **Intelligent Power Modules (iPMs)** which are available at the following ratings:

- 24Vdc, 400W, 10.0A (Max), 10.0A (Rated)
- 48Vdc, 480W, 10.0A (Max), 8.5A (Rated)
- 130Vdc, 480W, 4.0A (Max), 3.5A (Rated)

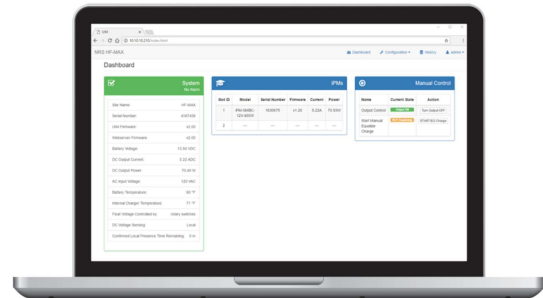
Multiple iPMs in a single chassis provide redundancy (N+1, N+2, etc.) and will continue to operate if the user interface module (UIM) fails. This ensures reliability for high availability/uptime applications. The BC-2500 features industrial construction and is available in 4 or 8-slot chassis options. The BC-2500 is compatible with vented lead-acid (VLA), valve regulated lead-acid, and nickel-cadmium (Ni-Cd) battery types.

## Product Features

- Industrial switch mode (high frequency) technology
- AC/DC powered UIM for continued operation without AC
- Heavy-duty construction for ruggedness and reliability
- Natural convection cooled (no fans)
- Conformal coated circuit boards for moisture protection
- High energy efficiency of > 93% at 240 VAC and > 91% at 120 VAC and full load
- Low DC output ripple - battery eliminator option standard
- Universal AC input: 100 – 240 VAC, 50 – 200 Hz
- Positive and negative ground fault alarms
- Battery temperature compensation with controlled limits
- Alarms can be individually enabled/disabled, assigned a delay, assigned a priority, and assigned to the Form C dry contact summary alarm relay
- AC input and DC output circuit breakers
- Ethernet for local access to logging data, and programming (using the *Confirm Local Presence* button for security)
- SNMP alarming and NTP date/time sync via Ethernet
- Real-time clock with battery backup
- Full AC input and DC output protection
- UL 1012 and cUL/CSA equivalents (pending)
- CE certified (pending)
- Digital amp/volt meter included standard on all units

## iPM (Intelligent Power Module)

- Modular component of the BC-2500
- Multiple iPMs in a single charger offer redundancy
- Hot swappable



View in Browser or Mobile Device

## Web-Based Software

- Internal web server uses a modern, responsive framework for attractive display on smart phones and tablets
- Access on any desktop PC or laptop via web browser
- View all measured parameters in real-time
- Log up to 10,000 history records, downloadable to a CSV file
- Ethernet communication standard for field or remote monitoring