

LB-Series Digital AC Load Banks (Up to 480V, 0-1000kW)



LB-Series AC Load Bank

Product Overview

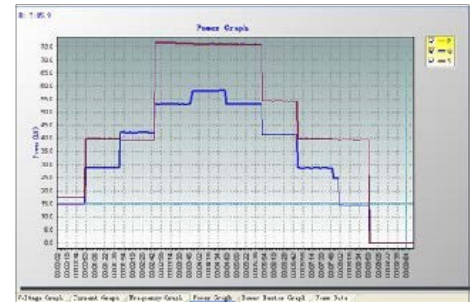
The LB-Series AC Load Banks are designed for high power portable load testing of generators, UPS, and other critical AC power sources. Available models meet a range of voltages including but not limited to 208, 380, 440, and 480 VDC. Load power model options reach 1000 kW standard with other options available. A steel outer chassis provides robust, durable housing for testing. Transport options include lift eyes, forklift slots, and castor wheels to for flexible testing options in both portable and permanent safety shutdowns or manual emergency shutdown. Comprehensive data management software is included.

Features

- Built in 3-line digital metering allows high-precision data collection
- Software included for detailed data analysis and intelligent remote control of unit with manual or automatic load testing options
- Automatic load testing allows user to set custom periods of power and time
- Real-time display of current, voltage, power, power factor, frequency, and time
- Built for portability with lifting eyes on top of unit for hoisting and casters
- Generate reports via Excel or JPG image export
- Emergency stop button for quick termination of load test
- Automatic stop protection for adverse conditions such as over load, over voltage, over temperature, short circuit, and insufficient air volume

Technical Specifications

Load Voltage	208, 240, 380, 400, 415, 440, or 480 volts
Load Power	50, 100, 200, 300, 500, 800, or 1000 kW
Frequency	50, 60, 400, or 1000 Hz
Power Factor	1
Wiring Options	Single Phase / 3-Phase, 3 Wire / 3-Phase, 4-Wire
Display	LCD multiple function display meter
Communication	RS232/485, USB
Cooling	Forced air cooling
Environmental	-10 – 50 °C (14 – 122 °F), ≤95% RH
Control	Local panel control, PC control
Fan Power Supply	Standard 120 VAC or 220/230 VAC Single Phase



Data Management Software

Ordering Information

Model #	Description
LB-XXX-50kW ⁽¹⁾	50 kW AC Load Bank at 208, 240, 380, 400, 415, 440, or 480 volts
LB-XXX-100kW	100 kW AC Load Bank at 208, 240, 380, 400, 415, 440, or 480 volts
LB-XXX-200kW	200 kW AC Load Bank at 208, 240, 380, 400, 415, 440, or 480 volts
LB-XXX-300kW	300 kW AC Load Bank at 208, 240, 380, 400, 415, 440, or 480 volts
LB-XXX-500kW	500 kW AC Load Bank at 208, 240, 380, 400, 415, 440, or 480 volts
LB-XXX-800kW	800 kW AC Load Bank at 208, 240, 380, 400, 415, 440, or 480 volts
LB-XXX-1000kW	1000 kW AC Load Bank at 208, 240, 380, 400, 415, 440, or 480 volts

¹⁾ Determine part number for required voltage, e.g. LB-XXX-50kW would be LB-240-50kW for 240V, 50kW applications

Order Includes

- LB-AC Load Bank
- 3m (10 ft.) power cable
- 10m (30ft.) RS485 cable
- RS485/RS232/USB converter
- Data management software

LB-Series AC Load Banks



LB-60-30 AC Load Bank

Product Overview

The LB-Series AC Load Banks are designed to provide a temporary load for field servicing and testing generators and inverters. Eagle Eye's AC Load Banks are among the smallest AC load banks in the industry that offer unmatched capacities with rugged durability.

Each AC Load Bank is fully self-contained and designed for portable AC load testing that can easily withstand harsh testing environments. Straightforward individual fan switches, load step switches, and master load switches make each unit user-friendly. Safety features are equipped on every AC Load Bank for fast acting, branch circuit fuse protection and sensors to prevent overheating and current overload. Each LB-Series AC Load Bank comes in a padded carrying case that can be easily transported to testing locations.

Technical Specifications	
LB-60-30 Load Steps:	120VAC Single Phase: .33, .66, .66, 1.66, 3.33, 3.33 KW 240VAC Single Phase: .66, 1.33, 1.33, 3.33, 6.66, 6.66 KW 208VAC Three Phase: 1, 2, 2, 5, 10, 10 KW
LB-60-30 Meters:	0-150V Voltmeter 0-100A Ammeter 55-65HZ Frequency Meter
LB-60-100 Load Steps:	120VAC Single Phase: 1.6, 1.6, 3.2, 3.2, 3.2 KW 240VAC Single Phase: 6.5, 6.5, 13, 13, 13 KW 208VAC Three Phase: 10, 10, 20, 20, 20 KW 480VAC Three Phase: 12.5, 12.5, 25, 25, 25 KW
LB-60-100 Meters:	0-600V Voltmeter 0-250A Ammeter 55-65HZ Frequency Meter
LB-400-72 Load Steps:	200VAC Three Phase: 9, 18, 27, 36, 42, 54, 63, 72 KW
LB-400-72 Meters:	0-250V Voltmeter 0-250A Ammeter 360-440HZ Frequency Meter
LB-400-100D Load Steps:	200VAC Three Phase: 10, 19, 28, 37, 46, 55, 64, 73, 82, 91, 100, 109 KW
LB-400-100D Meters:	48-600V Voltmeter 0-999A Ammeter 360-440HZ Frequency Meter

Product Features

- Portable, lightweight, and durable
- Temperature sensor removes load when over-temperature is detected
- Easy-to-use switches & controls for fan, load steps & master load
- Low-noise, high velocity cooling system
- Power indicator lights
- Quick connect for cables

Kit Includes

- LB-Series AC Load Bank
- Portable Carrying Case
- 10' Cables
- User Manual

Ordering Information

No.	Model #	Description
1	LB-60-30	60HZ 120/240VAC SINGLE PHASE 208V 3PHASE 30KW
2	LB-60-100	60HZ 480/208 3PHASE 100KW AT 480VAC AND 80KW AT 208VAC
3	LB-400-72	400HZ 72KW IN 8 9KW STEPS UP TO 72KW CONTINUOUS
4	LB-400-100D	400HZ 100KW IN 12 STEPS 10, 19, 28, 37, 46, 55, 64, 73, 82, 91, 100